

Promising Practices for Strengthening Primary Care

Culturally Safe Governance



The challenge

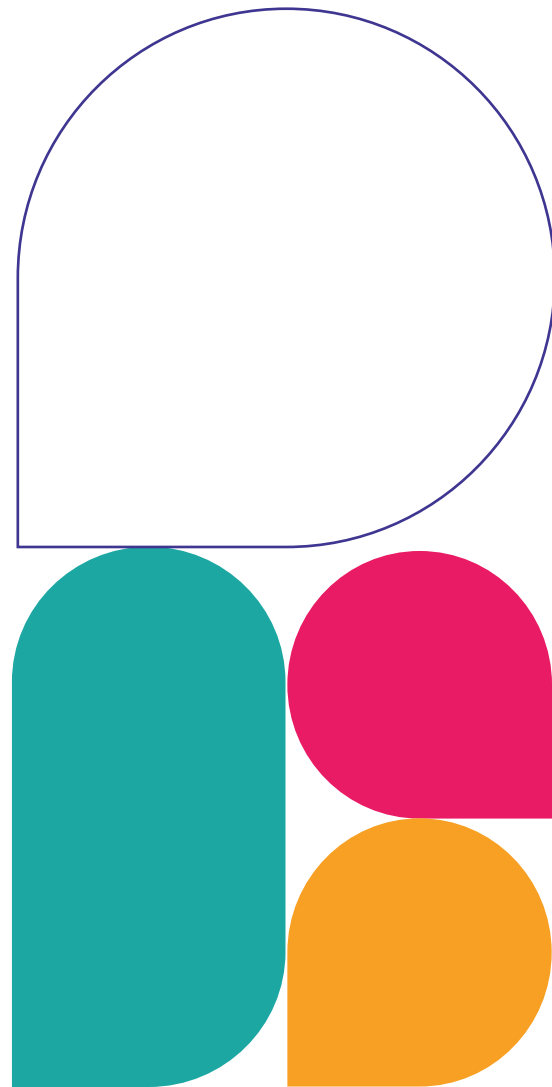
The es zúmin' Primary Care Centre – serving the five Southern Stl'atl'imx Nations (Líl'wat, N'Quatqua, Skatin, Samahquam and Xa'xtsa) – is one of 15 First Nations-Led Primary Care Initiative (FNPCI) sites under development within British Columbia. **The Southern Stl'atl'imx Nations felt it was essential to develop a First Nations-led legal entity and governance structure for the es zúmin' Primary Care Centre to ensure it provides culturally safe primary care for the five First Nations communities it serves.**

The promising practice

A legal entity and governance structure called the es zúmin' Primary Care Society (the Society) led by appointed representatives from the 5 First Nation communities is in place to govern the es zúmin' Primary Care Centre in a culturally safe way.

Example impacts

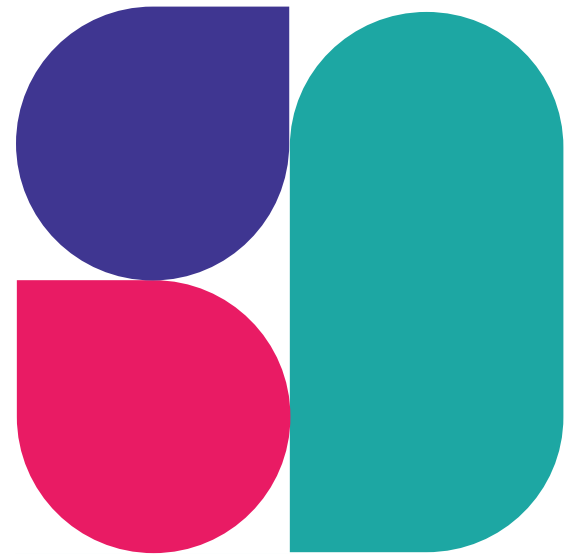
- The es zúmin' Primary Care Society and its associated founding Board has been established, led by the Southern Stl'atl'imx First Nations in the interest of Southern Stl'atl'imx First Nations.
- Communication and collaboration between the five First Nations communities and the interim funder of the es zúmin' Primary Care Centre (First Nations Health Authority) has improved. For example, clear channels of communications have been established, and regular meetings are occurring to plan the transfer of operations management from First Nations Health Authority to the es zúmin' Primary Care Society.



Promising Practices for Strengthening Primary Care

Keys to success

- **Autonomy:** The autonomous decision-making of First Nations people is essential for building structures that work to ensure culturally safe primary care for First Nations communities.
- **Funding** was essential to enable us to convene the five Nations to establish the legal entity and governing body and for overall project management support.
- **Champions:** Highly committed, visionary leaders from community were key to seeing this work through to completion.
- **Meaningful partnerships** with communities to guide how operations of the es zúmin' Primary Care Centre can provide culturally safe primary care. This will involve connecting directly with people living in the five First Nations communities and seeking their guidance.



Lessons learned

- To do this work we needed to legally appoint representatives (through joint Band Council Resolution [BCR]).
- Project support has been helpful for moving the initiative along – this work benefited from unbiased logistical and project management support.
- The pathway to developing the Society did not go exactly as planned – and being flexible to adapt the project plan was essential for success.

How can I learn more?

Contact the organization.

**Jessica Frank, Health Director,
Lílwat Health & Healing,**
jessica.frank@lilwat.ca

**Eppa (Gerard) Peters, Health Director,
Southern Stl'atl'imx Health Society,**
gerard.peters@sshs.ca



Why was this summary created?

Lílwat Health and Healing, participated in **Healthcare Excellence Canada's (HEC) Strengthening Primary Care (SPC)** program.

SPC brought together 20 primary care organizations from across Canada to advance practices to improve access to safe, including culturally safe, team-based primary care. This promising practice summary was co-produced with Lílwat Health and Healing to help others learn about their work and generate discussion about how similar approaches could be adapted and applied elsewhere.

This work was supported by Healthcare Excellence Canada (HEC). HEC is an independent, not-for-profit charity funded primarily by Health Canada. The views expressed herein do not necessarily represent those of Health Canada. Those preparing and/or contributing to this promising practice summary disclaim all liability or warranty of any kind, whether express or implied.