

APRIL 8, 2015

Emiliano
6.5 POUNDS



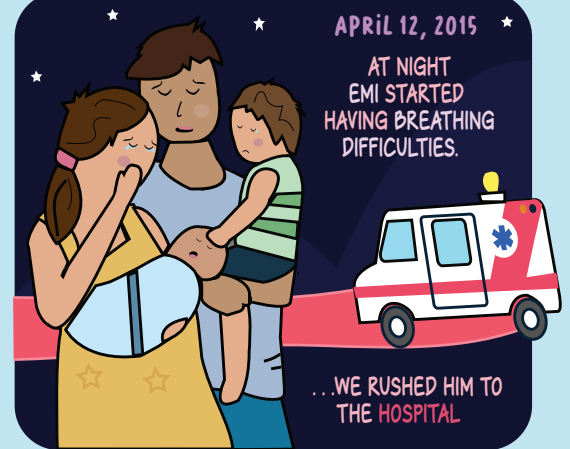
APRIL 11, 2015

WE BROUGHT OUR SECOND
BABY BOY HOME FROM
THE HOSPITAL.



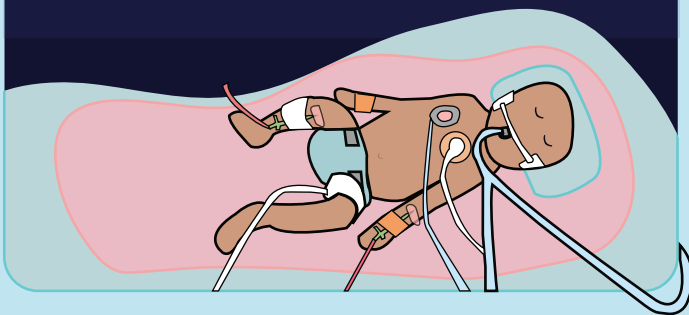
APRIL 12, 2015

AT NIGHT
EMI STARTED
HAVING BREATHING
DIFFICULTIES.



OUR BABY STOPPED BREATHING AND
HAD A DEVASTATING BRAIN INJURY.
HE WAS INTUBATED FOR 20 DAYS.

**30 DAYS IN
NICU**



SOON CAME THE FIRST DIAGNOSES:
CEREBRAL PALSY, SEIZURES,
DYSTONIA, DEAFBLINDNESS.

The brain injury was extensive.
He might never be able
to walk, see or hear.



SUDDENLY LIFE BECAME A ROLLER COASTER: THERAPIES,
TREATMENTS, SURGERIES. WE SOON DISCOVERED THAT
CARING FOR A MEDICALLY COMPLEX CHILD IS MORE THAN
A FULL-TIME JOB.

I'm going to quit my
job. We don't have
support and Emi needs
full-time care.

EMI HAD SEVERE FUNCTIONAL LIMITATIONS AND
FRAGILE HEALTH. HE REQUIRED EXTENSIVE CARE AND
SUPPORT. NOT HAVING ADEQUATE SERVICES AND
SUPPORTS WAS VERY CHALLENGING.



WHEN THE PANDEMIC STARTED WE WERE
EVEN MORE ISOLATED AND LONELY.

Nobody understands
what my family is
going through.



JULY 30, 2021

WE FEEL INVISIBLE

EMI IS NOW 6.
HE IS DEAFBLIND. HE
CAN'T HOLD HIS HEAD UP,
SIT, STAND OR WALK BY
HIMSELF AND REQUIRES
FULL SUPPORT FOR ALL
DAILY LIVING ACTIVITIES.
HE SUFFERS FROM A
SLEEP DISORDER AND IS
FREQUENTLY ILL.
HIS PARENTS ARE HIS
SOLE CAREGIVERS.

